



CU mini 1200 - User manual

# ELITE CU mini 1200

## User manual



Version July 2024



**THIS PAGE IS NOT WRITTEN INTENTIONALLY**



# 1. FIRST STEPS

Congratulations on your purchase of the ELITE model CU mini 1200 knives grinding machine.

Read this guide before you start.

The ELITE CU mini model 1200 is an industrial blade sharpener and grinder to achieve optimal quality for the work for which it has been intended. Its design and programming make it possible to optimize grinding work in an agile and safe way.

This manual introduces you to the main functions of the grinder in order to avoid risks to your health or that may cause a breakdown or premature wear of the machine.

In case of any doubt, please contact us directly or one of our authorized distributors.

*“**Informative Note:** The use described in the manual of this knives grinder described therein may present some variations in use as our machinery is subject to possible construction modifications, depending on the incorporation of technological advances in our sharpening equipment.”*



## **2.SAFETY**

### **2.1.Safety regulations**

Carefully observe and apply the following safety rules, not respecting these rules may cause personal injury or damage to the machine itself.

The installation and maintenance of the machine described in this manual must be carried out only by operators who are familiar with its operation and have sufficient technical knowledge.

The ELITE model CU mini 1200 have been designed for the sharpening of knives, excluding any other type of operation.



**DANGER HIGH VOLTAGE**



**DANGER OF ACCIDENT**



**DANGER DUE TO SPARK PROJECTION**



**WEAR PROTECTIVE SHOES**



**DANGER FROM SHARP TOOLS**



**USE HEARING PROTECTORS**

These warnings do not include all possible risks that improper use of the machine could cause. For this reason, the operator must proceed with prudence and observing the rules.



## 2.2. Use and storage of the instruction manual

This instruction manual must be read and understood by all personnel who come into contact with the machine.

This manual is for:

- Indicate the correct use of the machine according to the type of work to be carried out.
- Provide the necessary instructions for the transport, adjustment and maintenance of the machine.
- Facilitate the ordering of spare parts and information on risks.

Limits of use of the manual:

The machine is intended for professional use and therefore the experience of the operator is required and of vital importance.

Importance and conservation of the manual:

This manual must be considered part of the machine and must therefore be attached to it until the end of its use.

Additional information and clarifications:

The user, owner or maintenance person can contact the manufacturer to request any additional information on the use of the machine and possible modalities for maintenance and repair intervention.

Expiration of responsibility:

The manufacturer is considered exempt from any liability in the event of:

- Improper use of the machine.
- Use of the machine by untrained persons.
- Défaillances graves dans la maintenance planifiée.
- Serious failures in scheduled maintenance,
- Unauthorized interventions or modifications.
- Use of non-original spare parts.



## 2.3.Declaration of conformity

The company hereby **Elite Sharpening Machines, SLU**  
**C/Joan Oró, 27**  
**ES-08635 Sant Esteve Sesrovires**

declares that the product indicated below, based on its conception and construction, as well as the version put on the market by our company, complies with the mandatory basic health and safety requirements of the CE directive.

This declaration loses its validity in the event of unauthorized modifications to the product.

Product name: ***ELITE CU mini 1200***  
Product type: ***Industrial blade sharpener and grinder machine***  
Serial No.: \_\_\_\_\_

EC Directive Competences:

- **EC Machinery Directive (2006/42/EC)**
- **European directive on electromagnetic compatibility (2014/30/EU)**
- **The protection purposes of the CE low voltage directive (2006/95/CE) were fulfilled according to annex I, nr. 1.5.1 of the machinery directive 2006/42/EC**

The technical documentation was compiled by Legal representative of the documentation:

**Sergi Valls Gramunt**  
**Joan Oró, 27**  
**ES-08635 Sant Esteve Sesrovires**

Date / manufacturer - Signature: \_\_\_\_\_

Signatory data: Sergi Valls Gramunt, manager



**THIS PAGE IS NOT WRITTEN INTENTIONALLY**





### 3. TECHNICAL DATA

In the following information table, find the list of technical specifications of the sharpener described in this manual.

TECHNICAL DATA	CU mini 1200
Useful work capacity	Up to 1230 mm.
Grinding wheel motor power	3 HP for 50 Hz version - 4 HP for 60 Hz version. Direct drive
Diameter of grinding wheel	150 mm.
Grinding wheel automatic and programable downfeed	By means of guides with anti-friction vibration-dampening slide bearings and trapezoidal spindle.
Carriage speed	From 1 to 15 m/min.
Displacement of the motorized carriage	Movement on linear guides and translation by wheel.
Max. distance between grinding wheel and chuck	95 mm.
Magnetic chuck as standard	Yes.
Magnetic clamping chuck	1230 x 100 mm.
Chuck rotation	0° to +90°
Control panel	With LCD screen with program storage.
Coolant tank	90 liters
Max. connected power	4kW

AVAILABLE VERSIONS		
Model	Size (mm)	Weight (kg)
CU mini 1200	2200 x 650 x 1500	500



### **3.1. TECHNICAL REQUIREMENTS**

- Connection voltage: 220/400V 3Ph 50/60Hz
- Required connection power: 4 kW

### **3.2. EQUIPMENT INCLUDED**

- Magnetic clamping chuck of 1230x100 mm.
- Maximum step between chuck and grinding wheel: 95 mm.
- Adjustable chuck from 0° to 90°.
- Automatic grinding wheel lowering
- Partial lowering adjustable from 0.01 mm to 0.5 mm. Adjustable without steps.
- Total lowering adjustable from 0 to 5 mm. Adjustable without steps.
- Production program for sharpening knives of the same size.
- 3 HP grinding wheel motor. (4 HP in 60 Hz version). Optional: 4 HP motor
- ø150 mm grinding wheel.
- Easy-to-use control panel with LCD touch screen
- Refrigeration equipment with a capacity of 70 liters
- Prepared for connection to an ELITE centralized filtration system model FILTRAmag SOLO/PRO.
- Motorized carriage movement
- Carriage speed variator
- Working length adjustment
- Displacement of the lowering of the grinding wheel using guides with anti-vibration bearings.
- Manual inclinometer
- Bubble level



## 4. TRANSPORT

The ELITE model CU mini 1200 are delivered packed on a pallet, crate or wooden box. Depending on your destination and means of transportation.

During all transport and transfer, the machine must be kept in its original vertical position, any variation in this position may lead to the loss of the guarantee.



Machine model	Dimensions (mm)	Weight (Kg)
ELITE CU mini 1200	2200 x 650 x 1500	540



## 4.1. Instructions for unpacking and setting up

Take special care when lifting the load: The load may not be centered! To do this, use a forklift with blades long enough to support the machine, taking into account the width and depth of the machine for the calculation of the weights to lift.

Once the packaging has been opened, remove the fixing stops from the feet of the machine.



To remove the machine from the packaging, use a forklift only, with blades long enough to properly support it.

Be sure to lift the machine by placing the forklift blades in the two holes located on each side of the machine for this purpose.



The blades must remain open to the total that the machine's hole allows, in order to have better stability.

**DANGER OF OVERTURNING THE MACHINE IF IT IS NOT HANDLED CAREFULLY.  
AVOID BRAKES OR SUDDEN MOVEMENTS!**

Once the machine is located in its final location, you can now remove the protective film and other protections for components, which fixes and prevents the carriage from moving.



## 5. INSTALLATION

### 5.1. Machine placement

Before any work we must make sure that the machine is well aligned and does not oscillate at any of its ends, in which case it must be wedged to avoid movements. For its correct level it is necessary to use a spirit level. This check must be carried out both longitudinally and transversally.



Poorly leveling the machine can cause unwanted vibrations and premature wear of the linear guides.



**WARNING:** The machine must not be used under any circumstances by unqualified or unauthorized personnel.



## 5.2. Electrical connection



**DANGER HIGH VOLTAGE!**

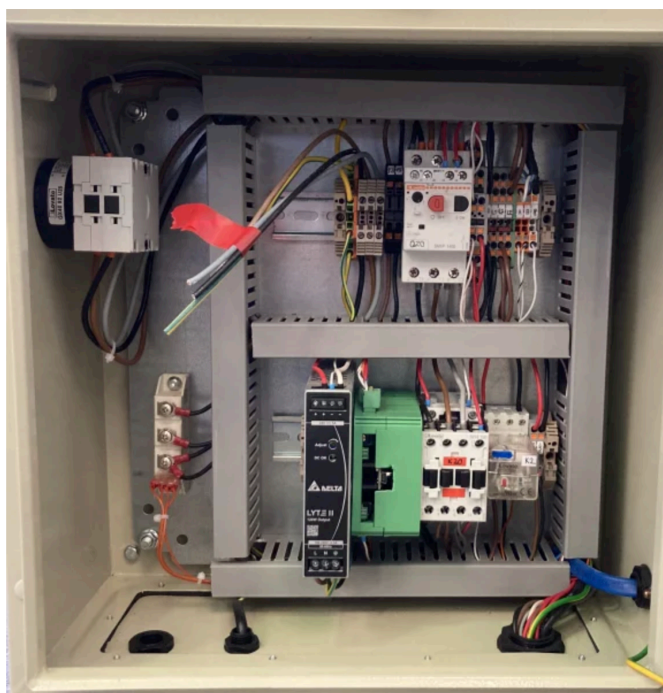
Remember: before connecting the machine, remove any protection that the machine may have to protect the components during transport.

The ELITE model CU mini 1200 grinding machine must be strictly connected to the voltage indicated in the machine order and on the machine itself. The connection to a voltage other than that indicated may cause a breakdown in the machine and represents a risk for people who use the machine.

This installation must be carried out by qualified technical personnel and checked with a voltage meter before turning on the machine.

It is absolutely essential that the cross-section of the connection cable is as required, that the machine has a dedicated outlet and is protected against overloads and shunts, and that it is as close as possible to the electrical outlet.

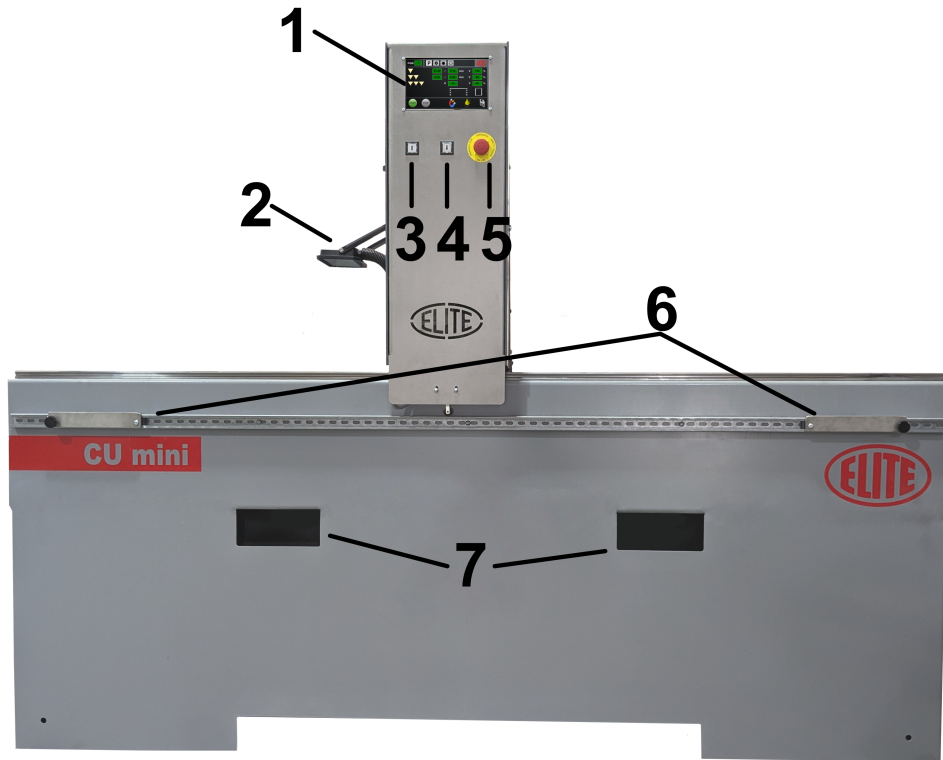
The electrical connection terminals have a red tape to facilitate correct connection.



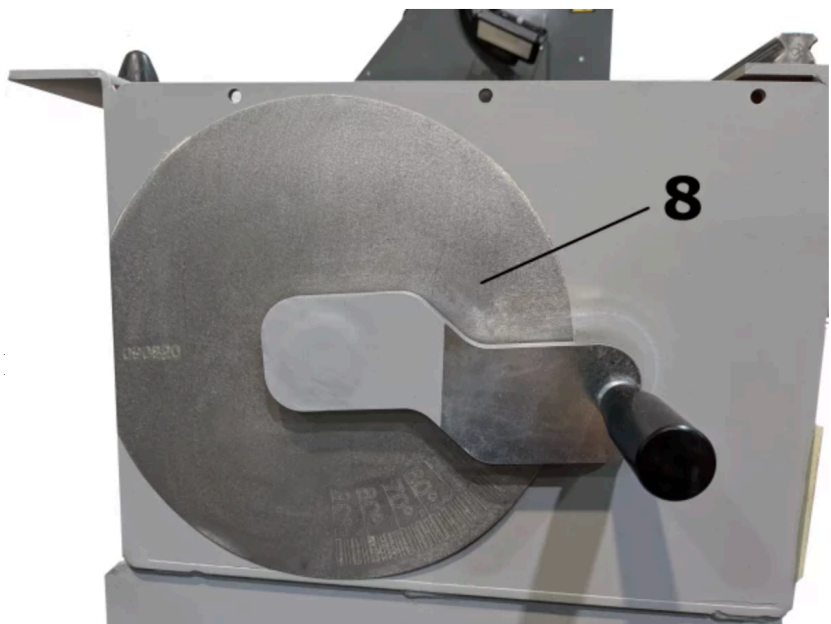
**ELITE does not assume any responsibility in the event of an incorrect electrical installation that may cause a malfunction of the machine and even personal or material damage.**



### 5.3. Main components of the machine



1. Display
2. LED light
3. Wheel up button
4. Wheel down button
5. Emergency stop
6. Carriage travel regulators
7. Holes for lifting the machine
8. Magnetic chuck degree selector







**For sections 6 to 8 of this manual, as well as for more up-to-date information and useful videos on the operation of the machine, please refer to our website**

**[www.elite.es](http://www.elite.es)**



[www.elite.es/en/support/manuals/cu-mini-1200](http://www.elite.es/en/support/manuals/cu-mini-1200)

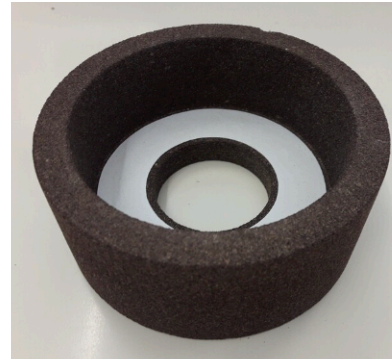


## 9.ACCESSORIES AND CONSUMABLES

### 9.1.Grinding wheels

#### 9.1.1.For heavy grinding wheels on steel blades

We recommend to use ELITE ref. nr. 3522-A2 or 3522-B2. 6A2 Resin  $\phi 150 \times 60 \times \phi 60$  mm.



Grinding wheel for sharpening steel blades

#### 9.1.2.For HSS or small material remove on steel blades



We recommend to use ELITE ref. nr. 3120-C2. 6A2  $\phi 150 \times 6 \times 4 \times 50 \times \phi 24$  CH8 B181 C75

Grinding wheel for HSS knives

#### 9.1.3.For tungsten carbide blades

We recommend to use ELITE ref. nr. 3020-A2. 6A2  $\phi 150 \times 6 \times 4 \times 50 \times \phi 24$  CH8 D126 C75



Grinding wheel for carbide knives



## 9.2.Coolant agents

### 9.2.1.Working only with steel and HSS

We recommend to use ELITE SintoCut MIX or equivalent when working only with steel.



SintoCut MIX 20 L

### 9.2.2.Working with steel and carbide

If the machine should work with steel and also with tungsten carbide then it is better to work with SintoCut PRO MIX or equivalent, with is a better choice in order to work with carbide.



SintoCut PRO MIX 20 L



## 9.3.Equipment

### 9.3.1.Filtering machines

Machine could be equipped with one of the following ELITE filtering systems. If your machine already has one of this systems and you need information or help, please refer to the manual of the filtering system.

#### 9.3.1.1. FILTRAmag SOLO



Independent filtering system for one machine.



### 9.3.1.2. FILTRAMAQ PRO

Centralized filtering system for up to 5 machines.



### 9.4. Demagnetizer

For blades or tools that become magnetized, we recommend using the ELITE demagnetizer.





[www.elite.es/en/support/manuals/cu-mini-1200](http://www.elite.es/en/support/manuals/cu-mini-1200)

**For more up-to-date information and useful videos on how to operate the machine, see our website [www.elite.es](http://www.elite.es)**